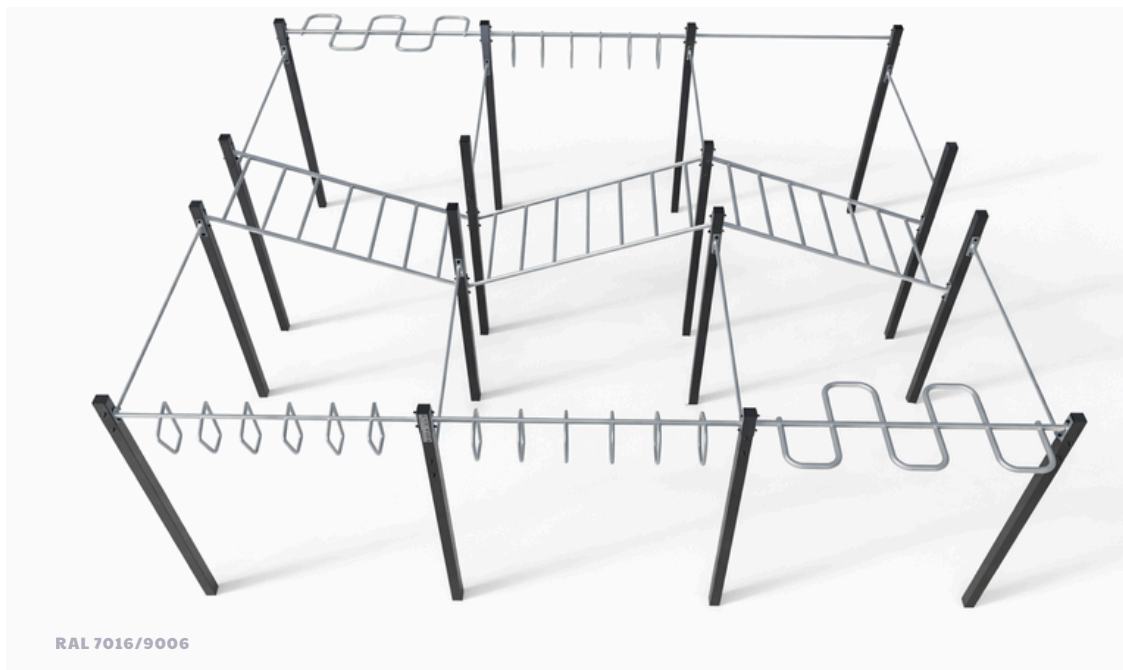


CODE

MULTI5

MULTI OUTDOOR PARK 5



PRODUCT DESCRIPTION

MULTI OUTDOOR PARK 5 is equipped with 9 horizontal bars (L=2m, H=1,7m-2,2m), Sticks with snake (L=2 m, H=2.2 m), Bars with wheels (L=2 m, H=2.2 m), Sticks with handle (L=2 m, H=2.2 m), Inclined ladders (L=2 m, H=1.45-2.1 m). It's perfect for strength and obstacle course training.

SUPPORTING STRUCTURE

Main steel profile 80 × 80 mm with a wall thickness of 3 mm, ensuring both static and dynamic stability of the set.

BAR SYSTEM

Steel pipes with diameters $\phi 60,3$, $\phi 42,4$, $\phi 33,7$ mm and wall thickness of 3.2 mm providing optimal grip and durability.

ANTI-CORROSION PROTECTION

Two-stage process: epoxy primer and polyester topcoat. Laboratory-tested powder coating technology with increased corrosion resistance:

KEY SPECIFICATIONS

| | |
|-----------------|----------------------|
| HIC MAX: | 150 cm |
| DIMENSIONS | 635 x 583,5 x 230 cm |
| SAFETY ZONE | 9,35 x 8,835 m |
| USER HEIGHT | >140 CM |
| MAX USER WEIGHT | 150 kg |
| TOTAL SURFACE | 82,6 m ² |

FINISHING DETAILS

Corrugated aluminum steps, rubber shock-absorbing bumpers, seats made of UV-resistant HDPE boards, and handles compliant with REACH standards.

INSTALLATION AND FOUNDATIONS

Installation on B25 concrete foundations with a minimum depth of 50 cm.

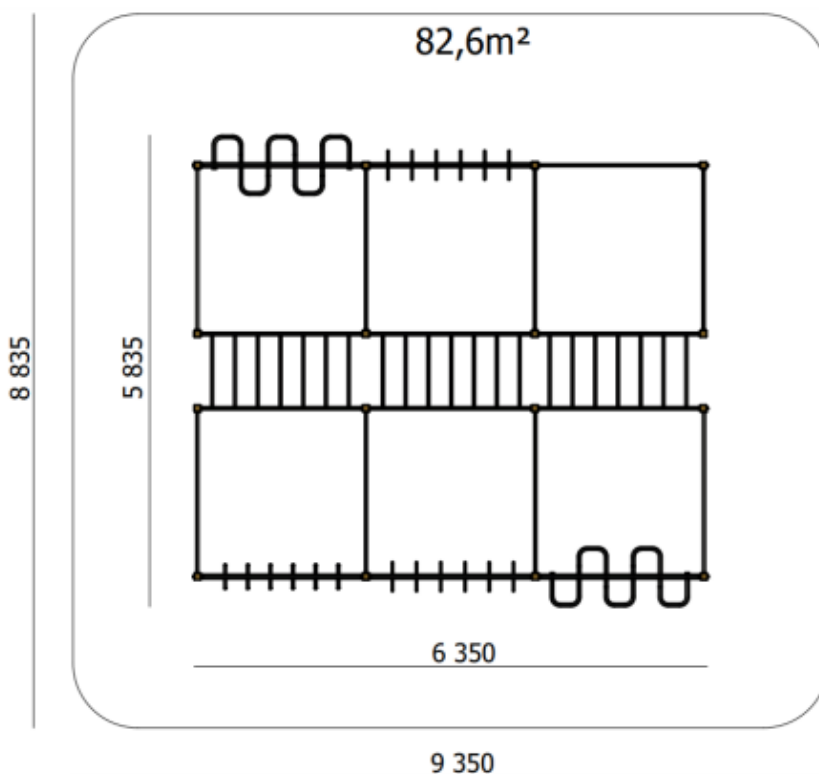
ADDITIONAL INFORMATION

Durable TRAINER logo and manufacturer plate with the device serial number. Compliance with standard: EN 16630:2015-06

CODE

MULTI5

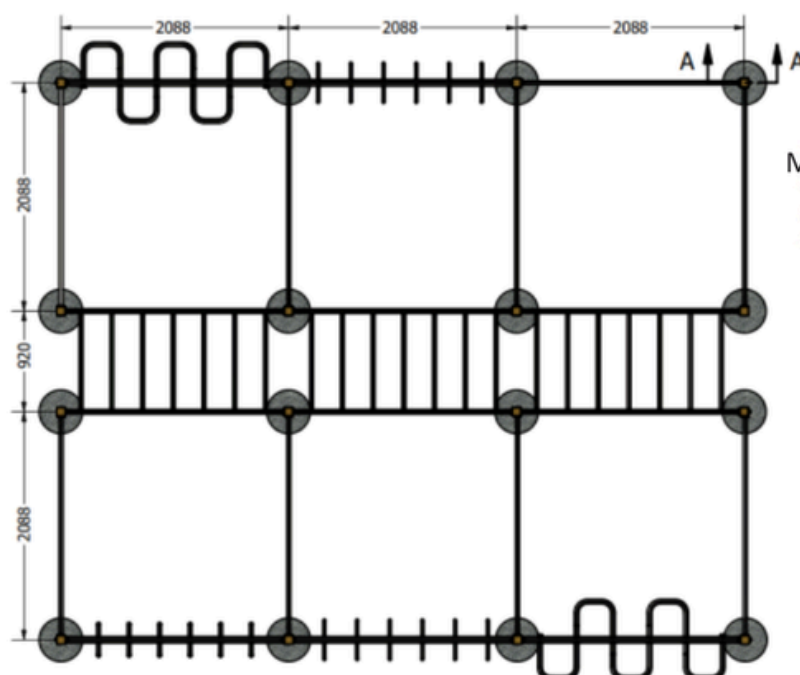
SAFETY ZONE



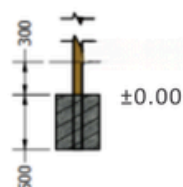
CODE

MULTI5

INSTALLATION



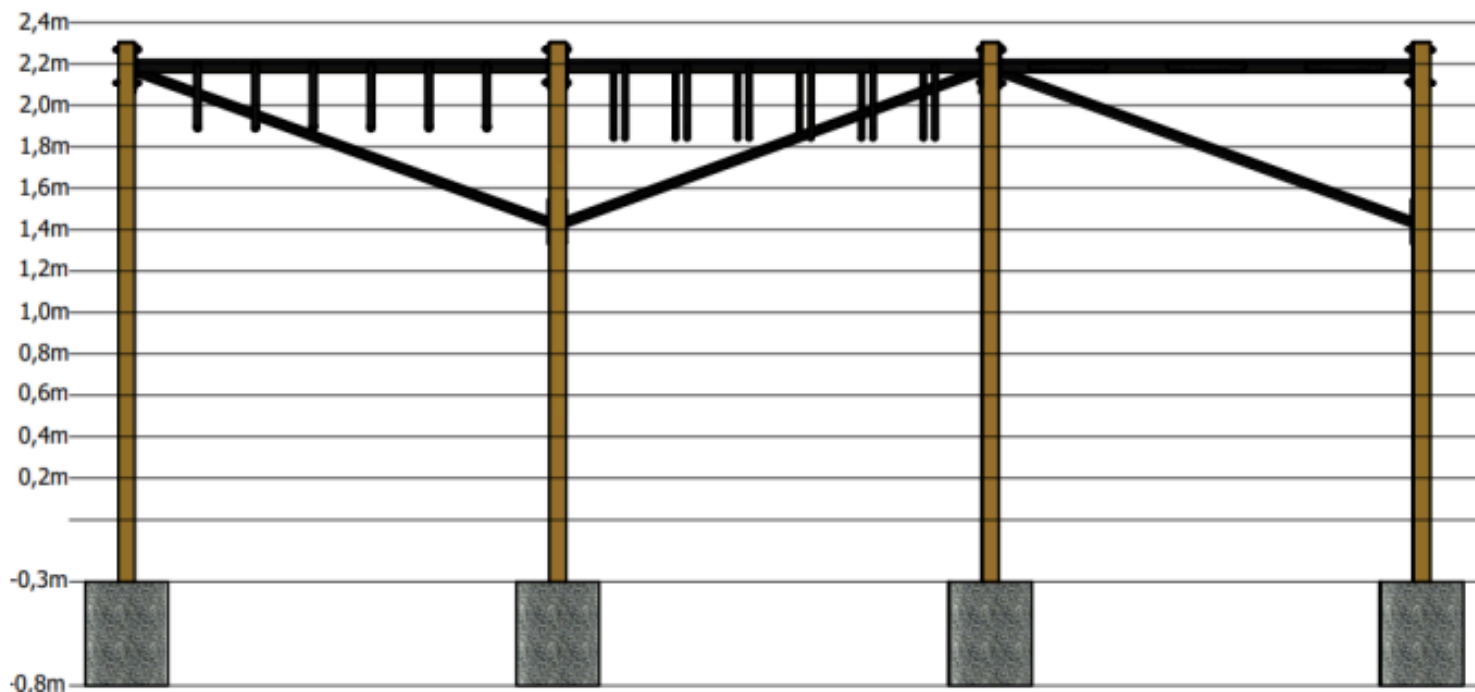
Multi Outdoor Park 5



CODE

MULTI5

HEIGHT



CODE

MULTI5

HEIGHT

