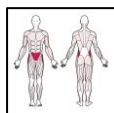




Exercises waist and helps to relax waist and back muscles, improves mobility and flexibility of the cross section of the spine. It can be joined together with the same or different device on middle board. Especially recommended in tandem with Surfboard.

<b>Product line:</b>	Outdoor gym
<b>Series:</b>	FIT
<b>Height Adults:</b>	<140 cm
<b>Allowable user weight:</b>	150 kg
<b>Length equipments:</b>	940 mm
<b>Width equipments:</b>	740 mm
<b>Height equipments:</b>	2020 mm
<b>Weight equipments:</b>	25 kg + pylon 50 kg
<b>Safety Zone:</b>	394 x 375 cm
<b>Compatible with norm:</b>	EN 16630:2015



D08+P01

Twister

**TRAINER**  
OUTDOOR GYM

