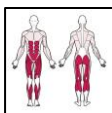




Stepper improves the mobility of the lower limbs. It can be joined together with the same or different device on middle board.

Product line:	Outdoor gym
Series:	FIT
Height Adults:	<140 cm
Allowable user weight:	150 kg
Length equipments:	960 mm
Width equipments:	740 mm
Height equipments:	2020 mm
Weight equipments:	50 kg + pylon 50 kg
Safety Zone:	396 x 374 cm
Compatible with norm:	EN 16630:2015



D21+P01

Stepper

TRAINER
OUTDOOR GYM

